

# FABRIC DISPLAYS

ONE CHOICE - 10 FT. FABRIC DISPLAY  
STRAIGHT

PRODUCT CODE: OC-EZT10STRG1 & OC-EZT10STRG2



Front View



Single-Sided Back View

## PRODUCT DESCRIPTION

Our tension fabric systems are a great alternative to standard backwall displays. Quickly assembled in just 5 minutes with no tools required, slide the tubes together to make the frame and lock in place with a push button snap. Then, simply pull the pillowcase-like graphic over the frame and zip it shut. The zipper, hidden from view, tightens the stretch fabric beautifully displaying your images. Disassembled, the lightweight frame and graphic fits inside a compact silver bag.

## FEATURES

- DISPLAY DIMENSIONS**
- 112" W x 91 1/2" H x 19 3/4" D
- GRAPHIC MATERIAL**
- Stretch Fabric
- DISPLAY CONSTRUCTION**
- 43 mm. dia. aluminum tubing

- GRAPHIC DIMENSIONS**
- 114" W x 91" H
- GRAPHIC FINISHING**
- Sewn on left, right, and top with a zipper at the bottom.

## WEIGHTS & DIMENSIONS (WITH STAND & GRAPHICS)

### SHIPPING WEIGHTS

- (Qty 1): 37 lbs
- (Qty 20): 740 lbs

### PACKAGE DIMENSIONS

- (Single Box): 13" L x 8" W x 53" H
- (Freight): 48" L x 40" W x 53" H skid

## TURNAROUND TIME

### GRAPHIC PACKAGE

- 2 business days after proof approval\*

### AVAILABILITY

- WEST COAST FULFILLMENT CENTER

\*After proof approval, for **up to 10 sets**. Reply with approval via e-mail by 4:00pm PT the day prior to the assigned ship date.



Scan QR Code To View More Resources.



# FABRIC DISPLAYS

ONE CHOICE - 10 FT. FABRIC DISPLAY  
STRAIGHT

PRODUCT CODE: OC-EZT10STRG1 & OC-EZT10STRG2



## PARTS LIST



**QTY 1:**  
**Silverbag**

- Outside Dimensions:**
- 48 1/2" W x 12 1/2" H x 6 1/2" D
- Inside Dimensions:**
- 48" W x 12" H x 6" D



**QTY 1:**  
**Bottom Horizontal Tube Set**

- 92 1/2" W (When assembled)  
(89" + 2 3/4" Tapered off at each end)



**QTY 1:**  
**Top Horizontal Tube Set**

- 106 1/2" W (When assembled)  
(2 3/4" Tapered off middle sections)



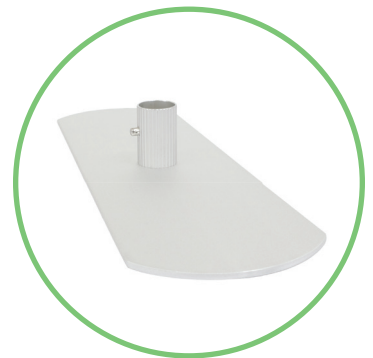
**QTY 2:**  
**Vertical Tube Sets**

- 82 1/4" H (When assembled)  
(79 1/2" + 2 3/4" Tapered off at each end)



**QTY 2:**  
**Bottom Corner Connectors**

- 11 3/4" W x 11 3/4" H



**QTY 2:**  
**Feet**

- 19 3/4" L x 6 1/4" W x 2 1/2" H  
(2 1/4" H + 1/4" H Tapered off)



Scan QR Code To View More Resources.



# FABRIC DISPLAYS

ONE CHOICE - 10 FT. FABRIC DISPLAY  
STRAIGHT

PRODUCT CODE: OC-EZT10STRG1 & OC-EZT10STRG2



## CARE SHEET - DYE-SUB FABRIC

### HANDLING TIPS

1. If your exhibit fabric has a zipper, please keep zipper closed for storage.
2. Wrinkles can be removed with cool iron or fabric steamer.
3. Fabric should NOT be stored when damp or wet. Store in cool, dry area.
4. For storing graphics please remove from plastic packaging that was provided and keep fabric in cool/dry place.

### WASHING

1. Your fabric graphic can be machine washed. Remove any hardware attached to the fabric prior to cleaning. Use MILD soap and cool water. Air dry fabric, dry on frame if frame is available.
2. Fabric must be COMPLETELY dry prior to storing.
3. DO NOT DRY CLEAN

### STAIN TREATMENT

1. Treat stain from backside of fabric.
2. Remove as much debris as possible with a soft bristle brush (do NOT rub too hard).
3. Use a clean, lint-free white cloth. Lightly pat the stain from the outside moving in (to keep stain from spreading).
4. If a cleaning solution is used, rinse the area well with water to ensure NO solution is left on fabric.
5. Most stains can be treated with household fabric stain removers. It is ALWAYS important to test how the solution will react to the fabric. This can be tested by dabbing solution to a small corner of the fabric. Most household cleaners will provide treatment instructions depending on the type of stain.



- Wrinkles can be removed from fabric with a cool iron or steamer.



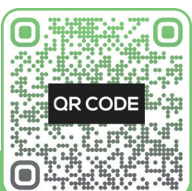
- Fabric can be machine washed - use cold water, delicate cycle.



- Do NOT bleach fabric



- Do NOT tumble dry. Fabric must be air dried on the frame to prevent shrinking.



Scan QR Code To View More Resources.